



CONSERVATÓRIO ESTADUAL DE MÚSICA
CORA PAVAN CAPPARELLI - UBERLÂNDIA

Musicalização Infantil - 2º ano

Aluno: _____ Sala: _____

Responsável: _____ Telefone _____

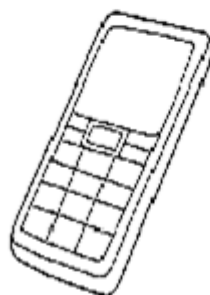
Professor: _____

Som

Som é tudo aquilo que ouvimos.

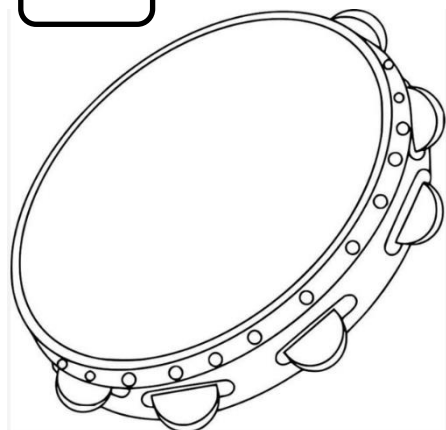
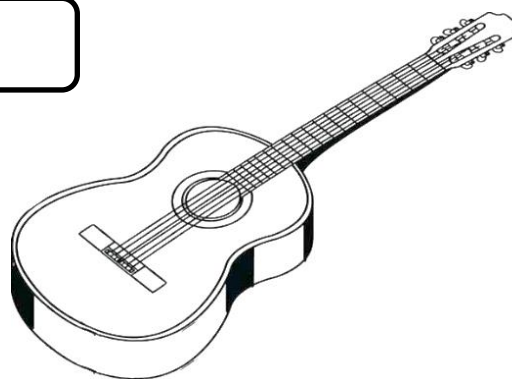
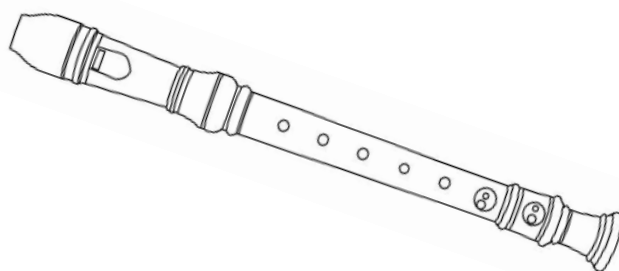
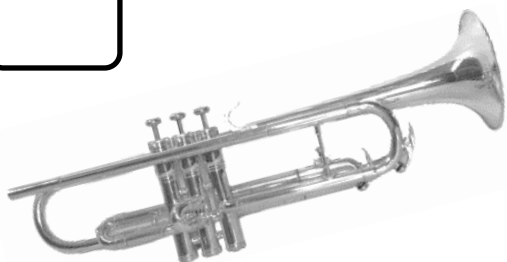


Qual o meio de comunicação que você pode
ouvir **SOM** ?
VAMOS ASSINALAR !!

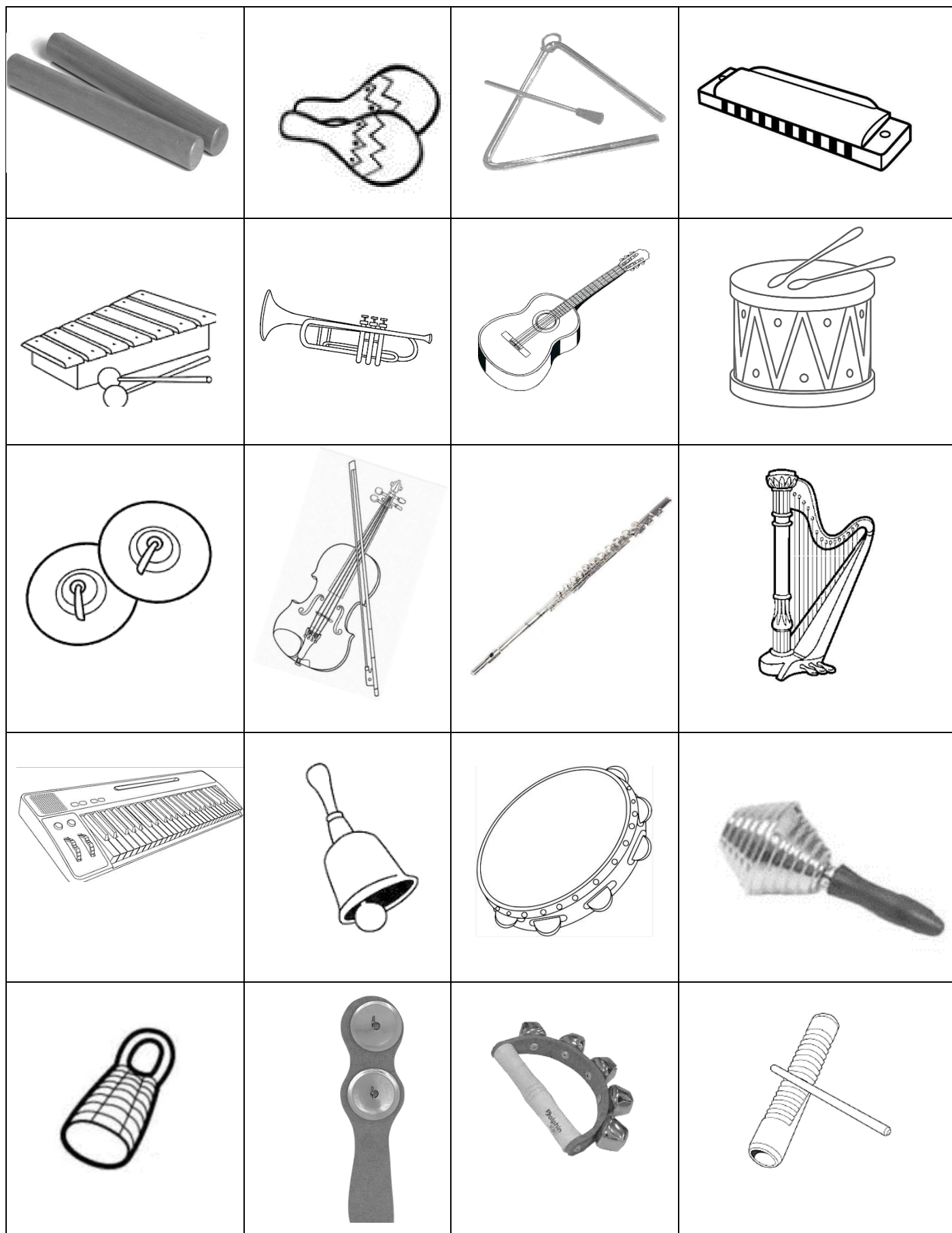


O TIMBRE DOS INSTRUMENTOS

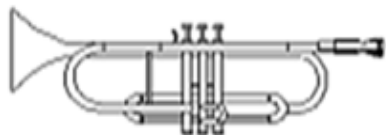
CADA INSTRUMENTO MUSICAL TEM UM TIMBRE DIFERENTE. VAMOS VER SE VOCÊ CONHECE O TIMBRE DESSES INSTRUMENTOS QUE ESTÃO DESENHADOS? ENUMERE DE ACORDO COM O SOM QUE VOCÊ VAI OUVIR:



Ouçá e fale o nome de cada instrumento



COM UM TRAÇO, LIGUE AS FIGURAS AOS NOMES CORRETOS.



VIOLÃO

PIANO

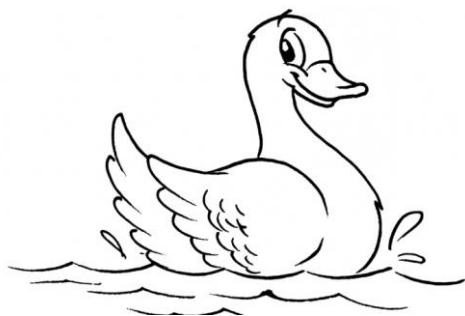
TAMBOR

TROMPETE

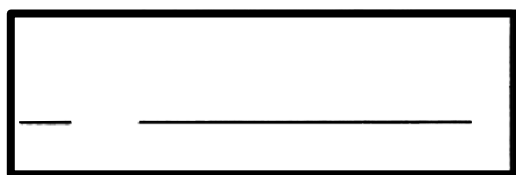
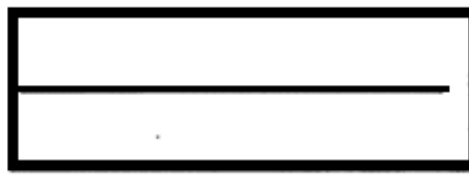
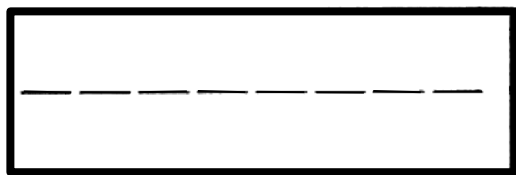
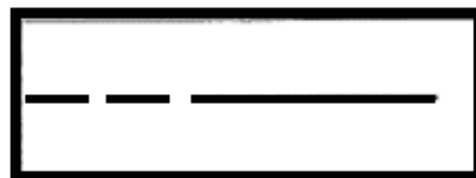
CLAVE DE SOL

INTENSIDADE

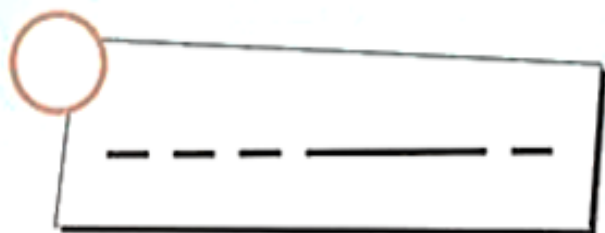
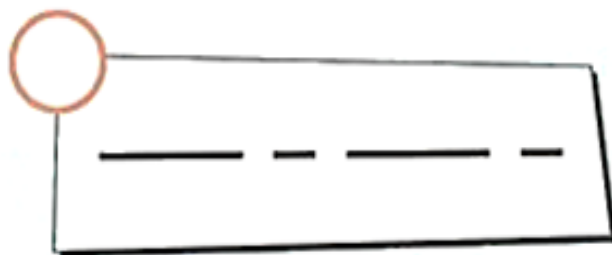
Cada som pode ser forte ou fraco. Circule de verde o desenho que sugere um som forte e de vermelho o que sugere um som fraco.



Vamos cantar esses sons curtos e longos? Com a sílaba U.....



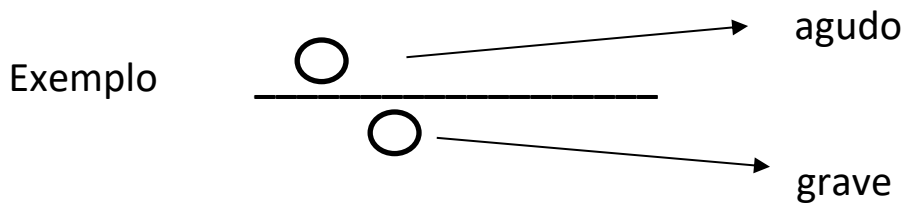
- Enumere de acordo com o que o professor executar.



ALTURA

A altura do som pode variar de um som bem grave até um som bem agudo. As notas musicais são assim também, vão subindo do grave para o agudo e descendo do agudo para o grave.

DESENHE UM CÍRCULO **AZUL** ACIMA DA LINHA QUANDO O SOM FOR AGUDO E UM CÍRCULO VERMELHO QUANDO O SOM FOR **GRAVE**:



1- _____

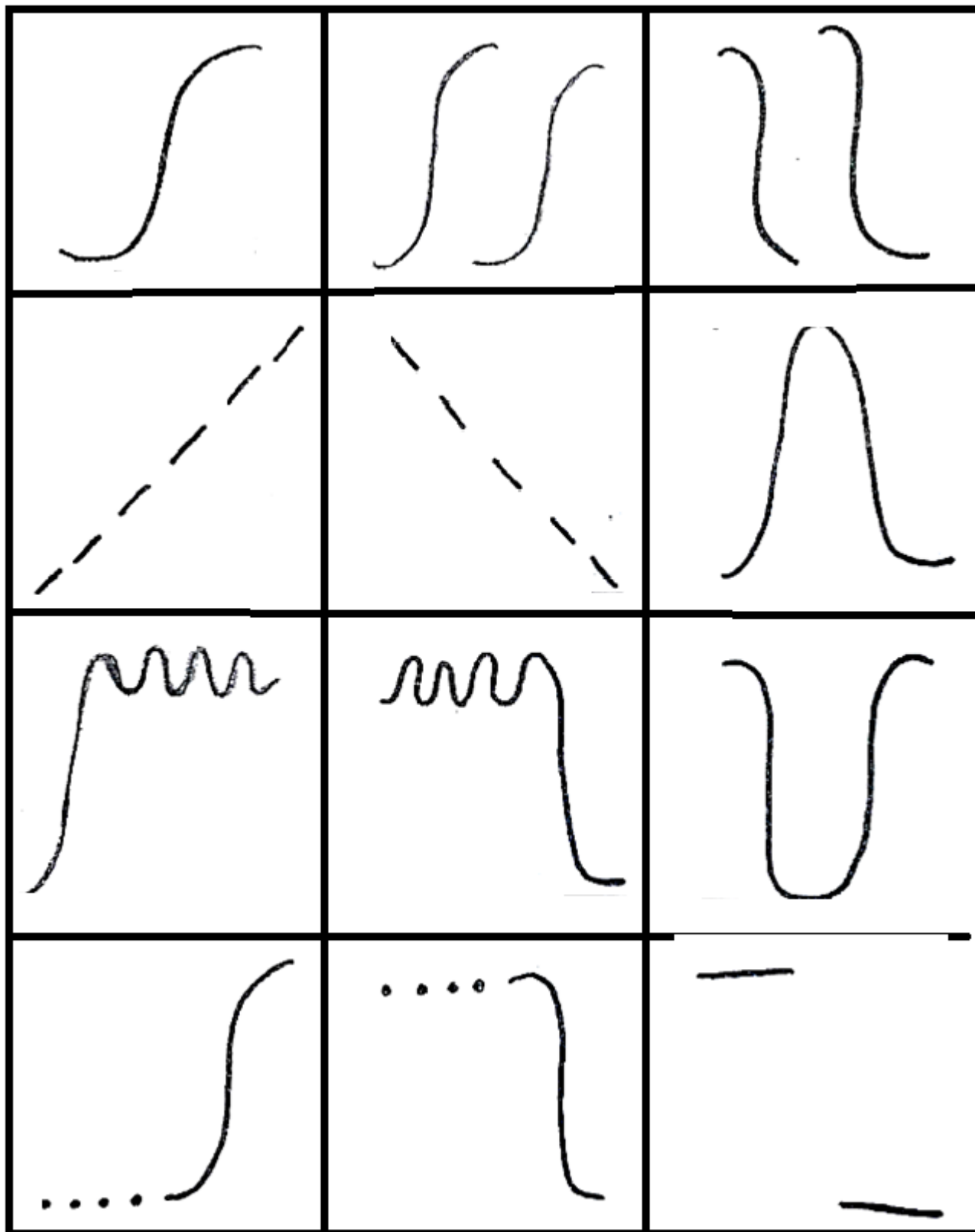
2- _____

3- _____

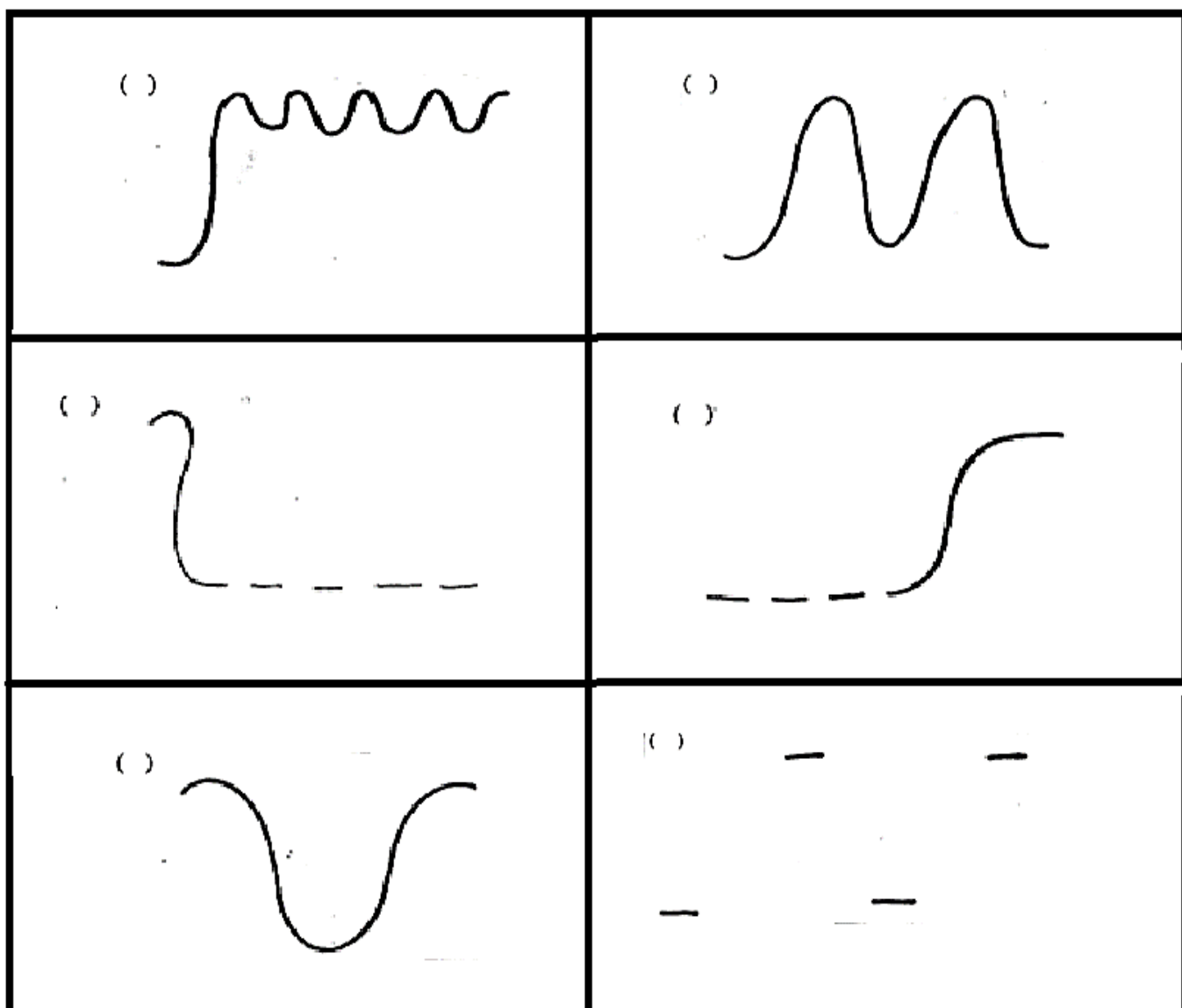
4- _____

5- _____

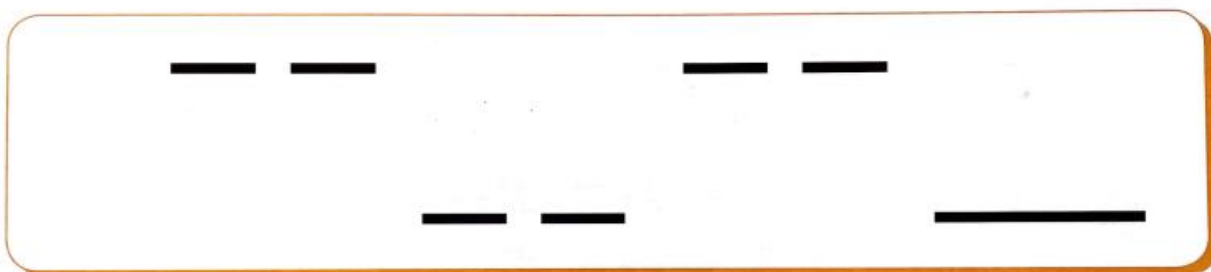
- Vamos ler essas representações do som coma sílaba U, movimentando o corpo



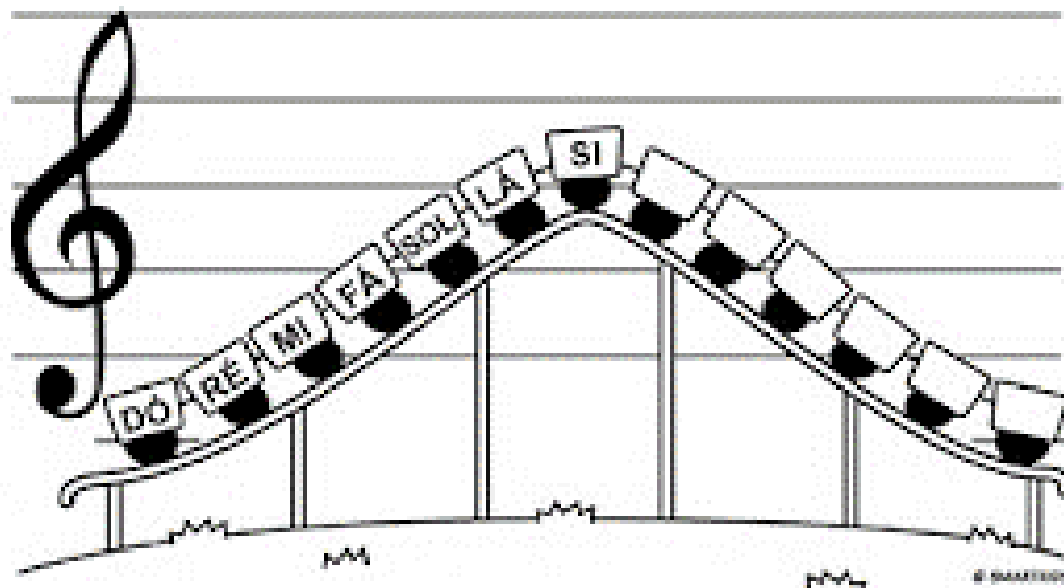
- Enumere as sequencias dos sons ouvidas:



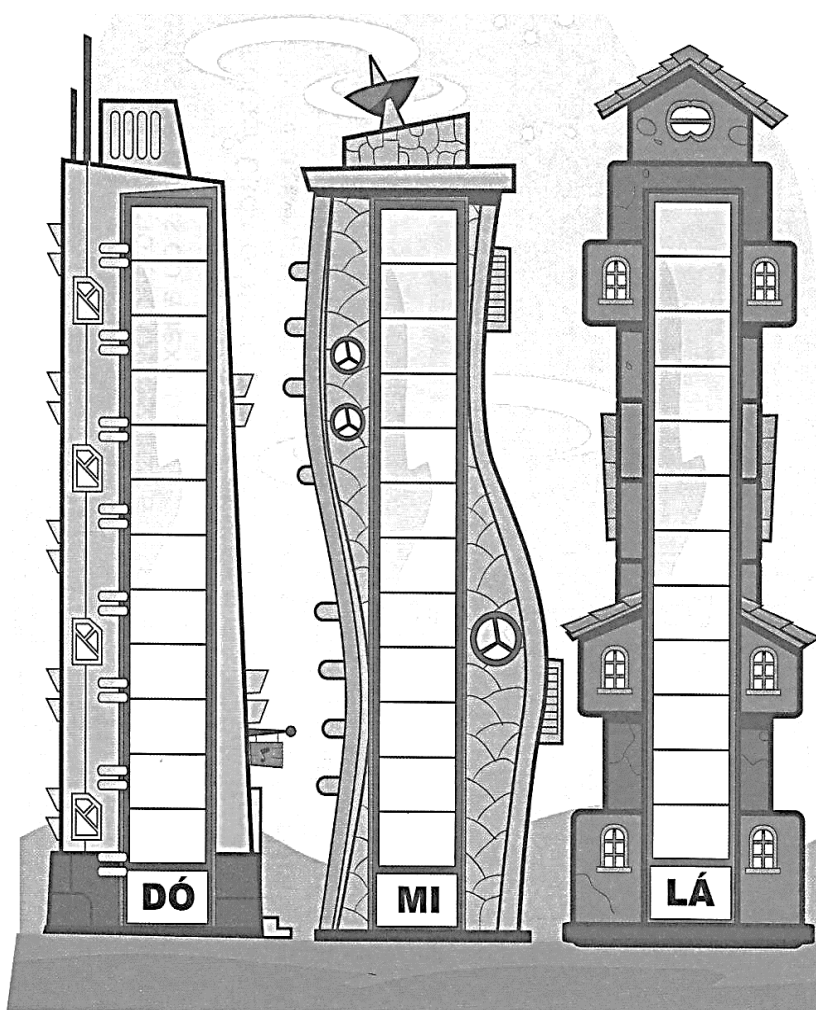
- Vamos cantar a música CASINHA DA VOVÓ.(Dó – Lá)



NOTAS MUSICAIS



- Preencha o prédio com as notas vizinhas. Atenção com qual nota está começando:



ESTA VIZINHANÇA ESTÁ
INCOMPLETA. COMPLETE
AS NOTINHAS VIZINHAS QUE
ESTÃO FALTANDO



VOCÊ SABE O NOME DE TODAS AS NOTAS MUSICAIS?
ELAS SÃO SETE: DÓ, RÉ, MI, FÁ, SOL, LÁ e SI.
DEPOIS DO SI, COMEÇA TUDO DE NOVO!

1. VAMOS COMPLETAR?

DÓ ___ MI ___ SOL ___ SI ___ RÉ ___ FÁ ___ LÁ ___ DÓ

2. ESCREVA O NOME DAS NOTAS VIZINHAS, OU SEJA, A QUE
VEM ANTES E A QUE VEM DEPOIS DA NOTA ESCRITA:

___ RÉ ___

___ SOL ___

___ DÓ ___

___ FÁ ___

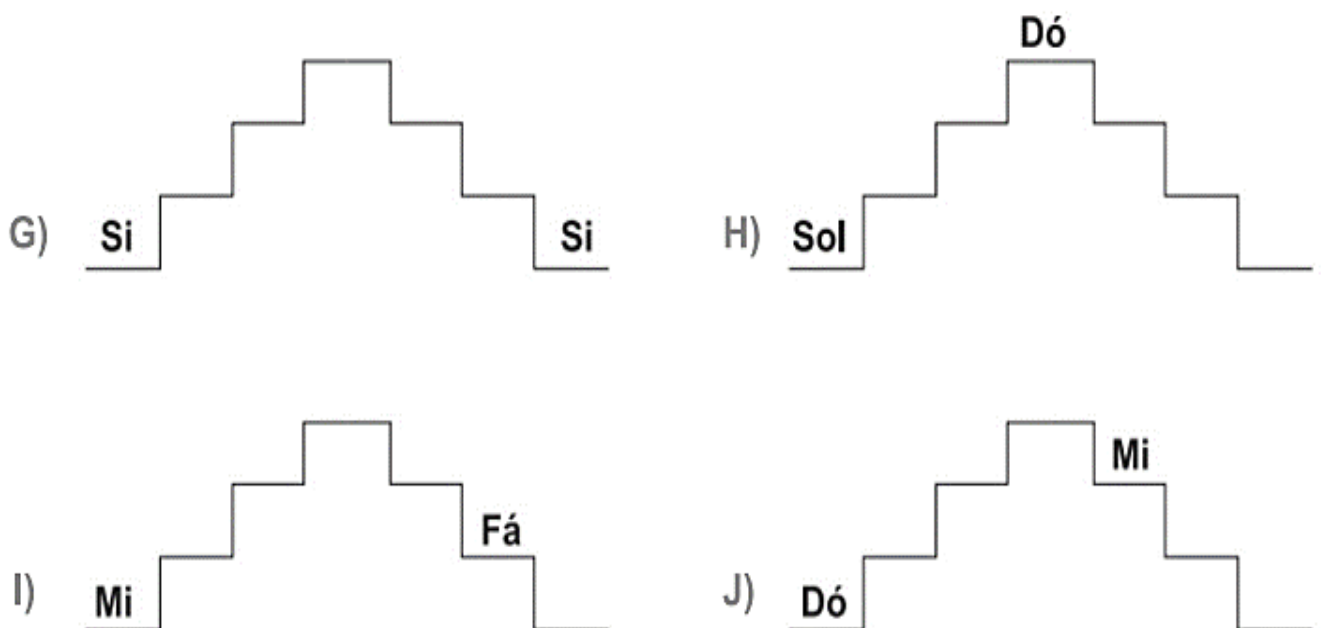
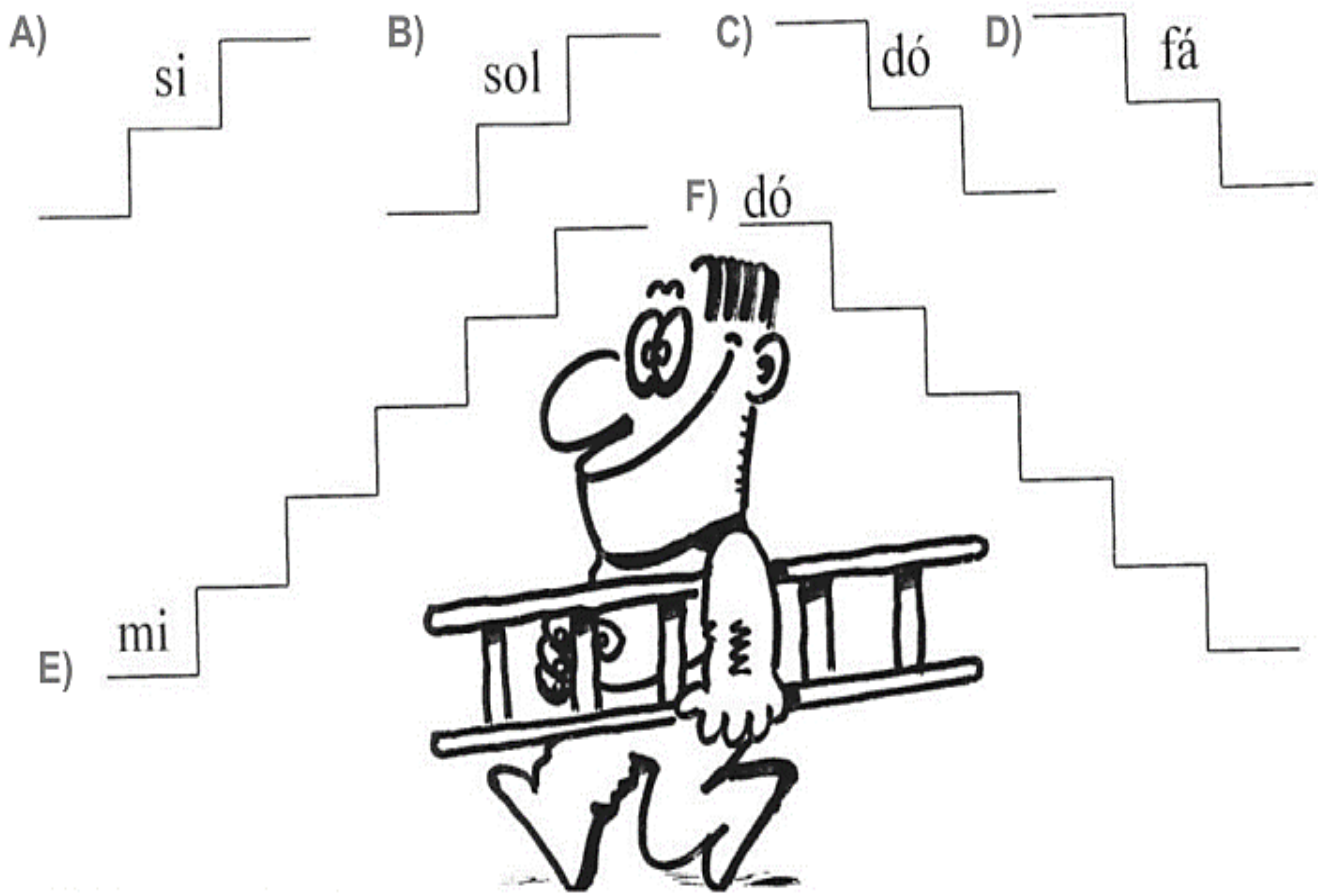
___ MI ___

___ LÁ ___

___ SI ___

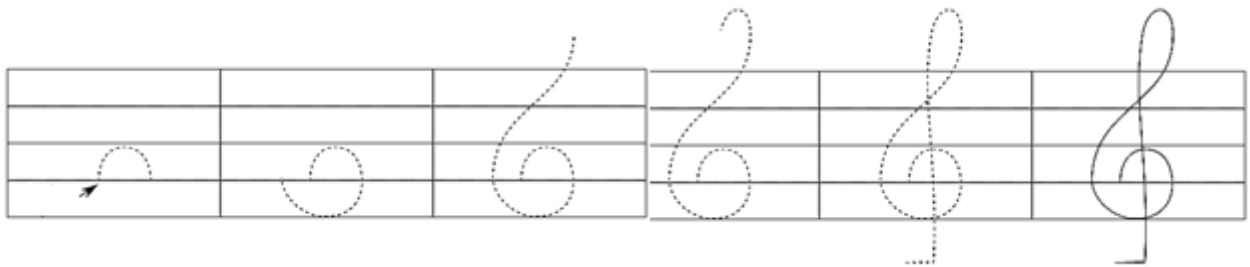
___ DÓ ___

COMPLETAR AS ESCADINHAS MUSICAIS



CLAVE DE SOL

A clave de sol é usada no início da pauta ou pentagrama e representa os sons médios e agudos.



Tente escrever a clave de sol do início e depois continue sozinho começando na 2ª linha.



- Escreva o nome das notas nos quadrados abaixo:

A musical staff in treble clef with a key signature of one flat (Bb). The notes are G4 (first space), A4 (second space), B4 (third space), C5 (first line), B4 (third space), A4 (second space), and G4 (first space). Below the staff are five empty square boxes for labeling.

A musical staff in treble clef with a key signature of one flat (Bb). The notes are G4 (first space), A4 (second space), B4 (third space), C5 (first line), B4 (third space), A4 (second space), and G4 (first space). Below the staff are five empty square boxes for labeling.

A musical staff in treble clef with a key signature of one flat (Bb). The notes are G4 (first space), A4 (second space), B4 (third space), C5 (first line), B4 (third space), A4 (second space), and G4 (first space). Below the staff are five empty square boxes for labeling.

A musical staff in treble clef with a key signature of one flat (Bb). The notes are G4 (first space), A4 (second space), B4 (third space), C5 (first line), B4 (third space), A4 (second space), and G4 (first space). Below the staff are five empty square boxes for labeling.

A musical staff in treble clef with a key signature of one flat (Bb). The notes are G4 (first space), A4 (second space), B4 (third space), C5 (first line), B4 (third space), A4 (second space), and G4 (first space). Below the staff are five empty square boxes for labeling.

A musical staff in treble clef with a key signature of one flat (Bb). The notes are G4 (first space), A4 (second space), B4 (third space), C5 (first line), B4 (third space), A4 (second space), and G4 (first space). Below the staff are five empty square boxes for labeling.

A musical staff in treble clef with a key signature of one flat (Bb). The notes are G4 (first space), A4 (second space), B4 (third space), C5 (first line), B4 (third space), A4 (second space), and G4 (first space). Below the staff are six empty square boxes for labeling.

A musical staff in treble clef with a key signature of one flat (Bb). The notes are G4 (first space), A4 (second space), B4 (third space), C5 (first line), B4 (third space), A4 (second space), and G4 (first space). Below the staff are six empty square boxes for labeling.

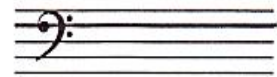
A musical staff in treble clef with a key signature of one flat (Bb). The notes are G4 (first space), A4 (second space), B4 (third space), C5 (first line), B4 (third space), A4 (second space), and G4 (first space). Below the staff are six empty square boxes for labeling.

CLAVE DE FÁ

A clave de é usada no início da pauta ou pentagrama e representa os sons médios e graves.

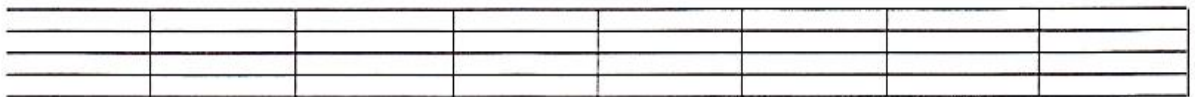


Clave de Fá

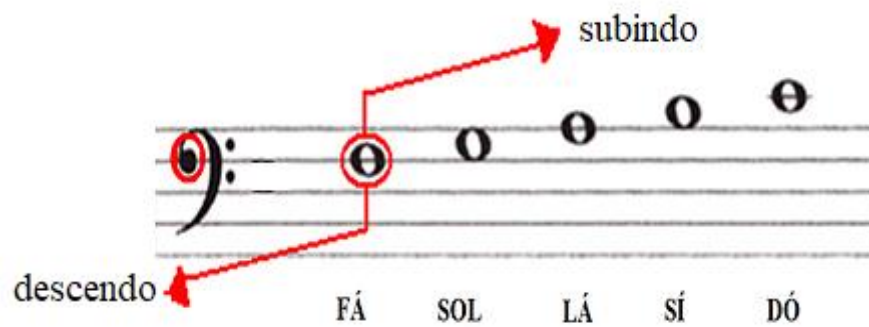


4ª linha

Escreva a clave de fá do início e depois continue sozinho começando na 4ª linha.



CALVE DE Fá come ça a ser desenhada na 4ª linha e a nota escrita nessa linha recebe o nome de Fá



Olha o que aconteceu: as duas claves se encontram:

subindo

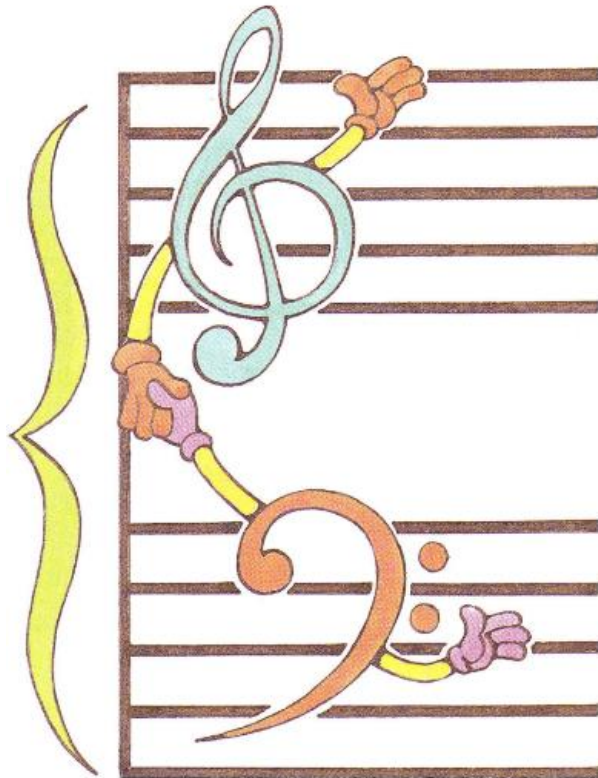
Dó Ré Mi Fá Sol

Fá Sol Lá Si Dó

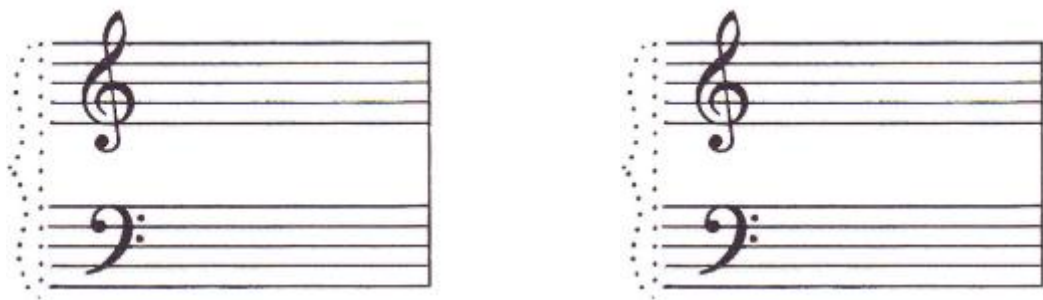
descendo

A nota Dó é a mesma e tem a mesma altura

E podem ser escritas assim: com duas pautas



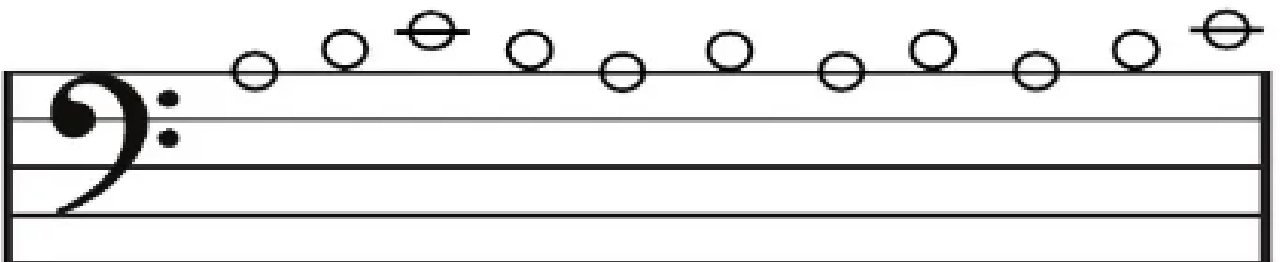
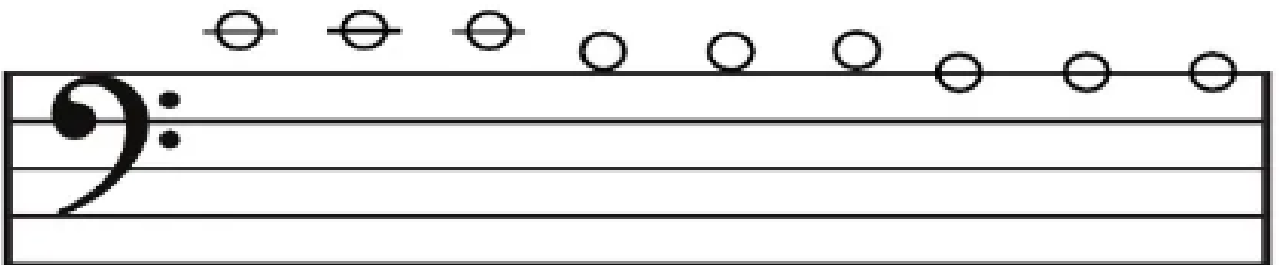
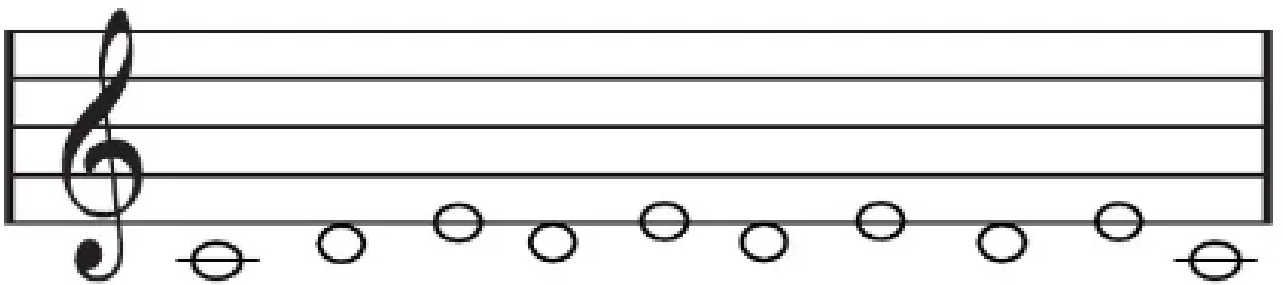
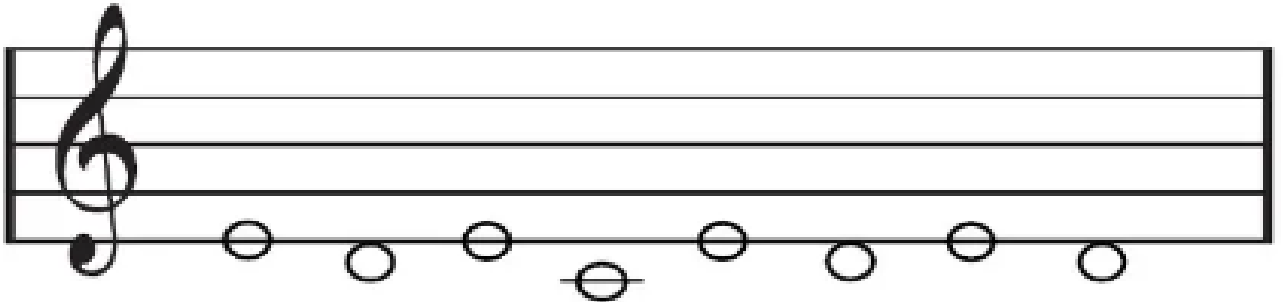
- Escreva nos pontilhados a barra e a chave pra unir as duas pautas:



Ficando assim:



- Coloque o nome nas notas. Atenção nas claves:



- Agora com as duas claves:



- Na música acima, a nota mais aguda é _____ ela fica na clave de _____ e a nota mais grave _____, que fica na clave de _____

RECORDANDO

Ligue as notas com os seus nomes.



sol



ré



mi



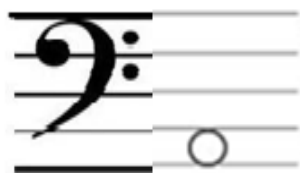
fá



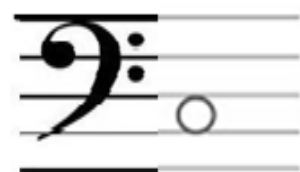
si



Ligue as notas com os seus nomes.



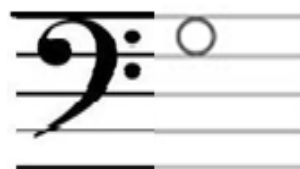
LÁ



SOL



DÓ



MI



FIGURAS MUSICAIS

- Escreva o nome das figuras







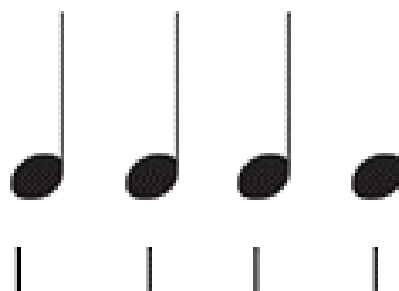
O som mais longo é da Semibreve (_____)

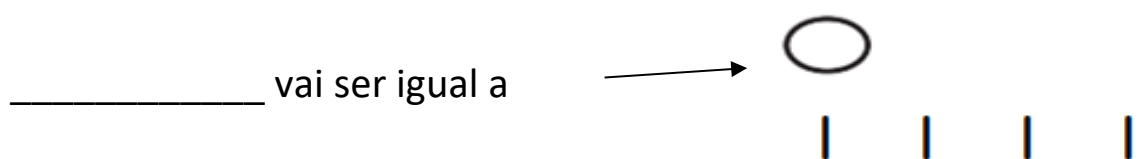
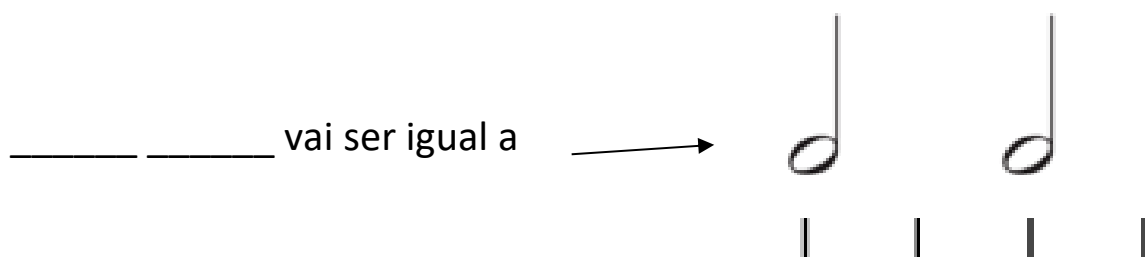
O som da mínima é a metade da semibreve (_____)

E o som da semínima é a metade da mínima (_____)



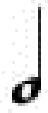
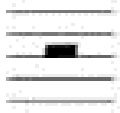


Vamos combinar assim: a semínima vai ter uma pulsação

_____ vai ser igual a











Como temos o SOM, temos também o silêncio que são representados pelas PAUSAS ou figuras de silêncio.

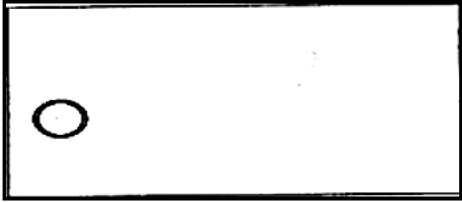

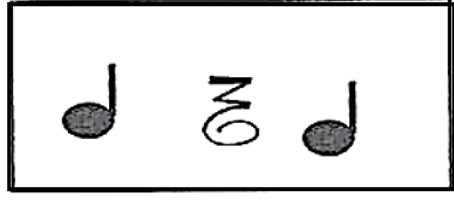

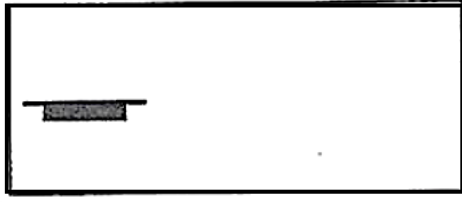
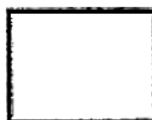

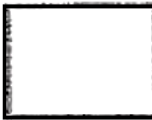
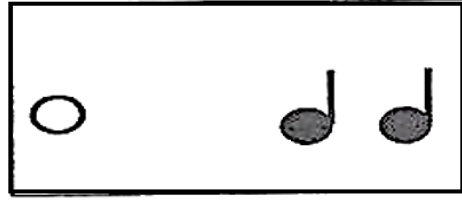

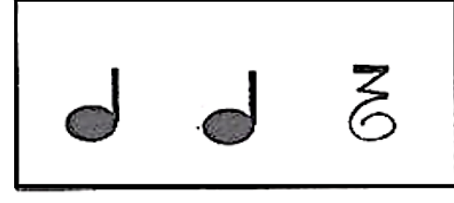
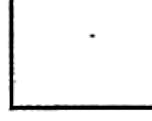
Nome	Figuras de Som	Figuras de Silêncio
Semibreve		
Mínima		
Semínima		

- Marque as pulsações nas figuras abaixo e faça a leitura com a sílaba tá:



- Numere a sequencia ouvida:

	<input type="checkbox"/>		<input type="checkbox"/>
	<input type="checkbox"/>		<input type="checkbox"/>
	<input type="checkbox"/>		<input type="checkbox"/>

DITADO

- Vamos conhecer outras figuras

FIGURA	NOME
	SEMIBREVE
	MÍNIMA
	SEMÍNIMA
	COLCHEIA
	SEMICOLCHEIA
	FUSA
	SEMIFUSA

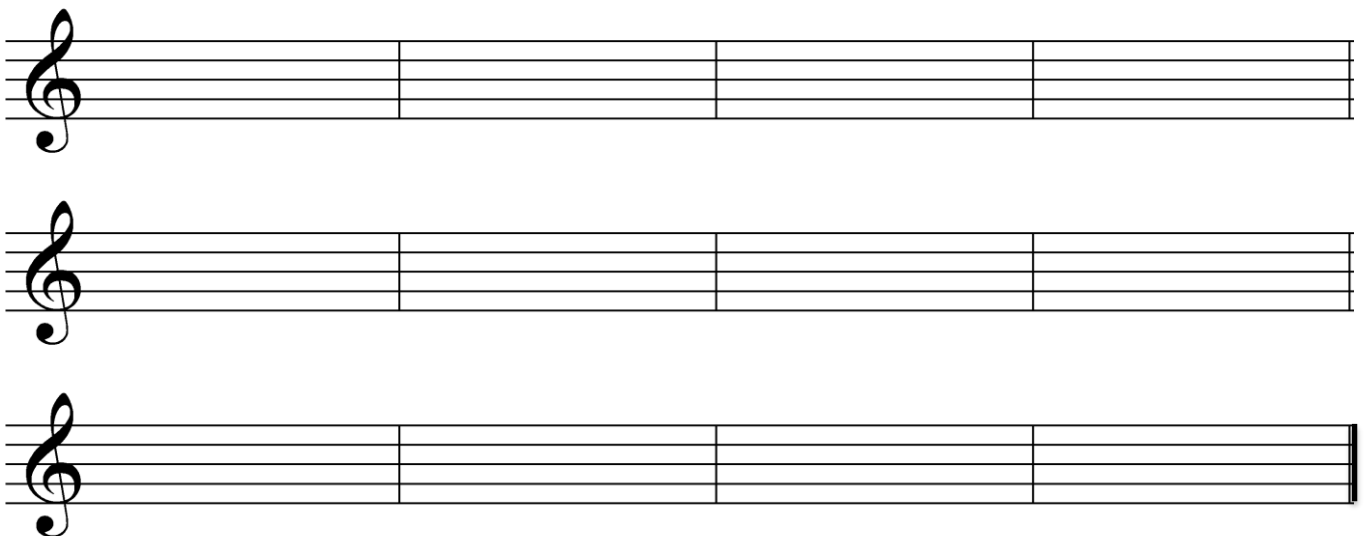


- Faça leitura das notas e copie essa canção na pauta abaixo:

Brilha, Brilha Estrelinha



OBS: Perceberam que tem 4 tempos em cada compasso? Preencha os compassos abaixo com 4 tempos cada:



Duas Colcheias – tem o mesmo valor que uma semínima. Elas são ligadas por um *colchete*(barras)



- Desenhe o colchete (barras) para unir as colcheias:



- Considerando a semínima 1 pulso, leia o ritmo abaixo marcando a pulsação:



- Leia a canção abaixo somente o ritmo depois com nome de notas:

Na Escola

REVISÃO

- Desenhe 4 semínimas _____
- Desenhe 2 mínimas _____
- Desenhe 4 semibreves _____
- Desenhe 2 colcheias unidas por barras _____

- Leia o ritmo  

- Escreva o nome das figuras



- Qual o nome dessa  clave _____

- Qual o nome dessa  clave _____

- Na clave de _____ são escritas notas médias e agudas e a clave de _____ são escritas sons médios e graves.

- As notas escritas na clave de sol tem o mesmo nome das notas escritas na clave de fá? _____



- Escreva o nome das notas e das figuras usadas na música abaixo:

Parabéns



Quais as notas usadas

Quais as figuras usadas
